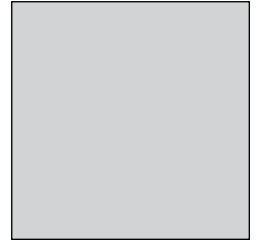
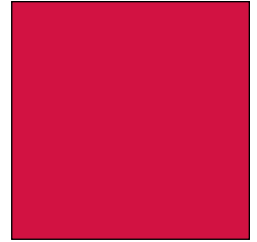




**Suite 204**



**1,194 RSF**



**CLASS A OFFICE SPACE FOR LEASE**

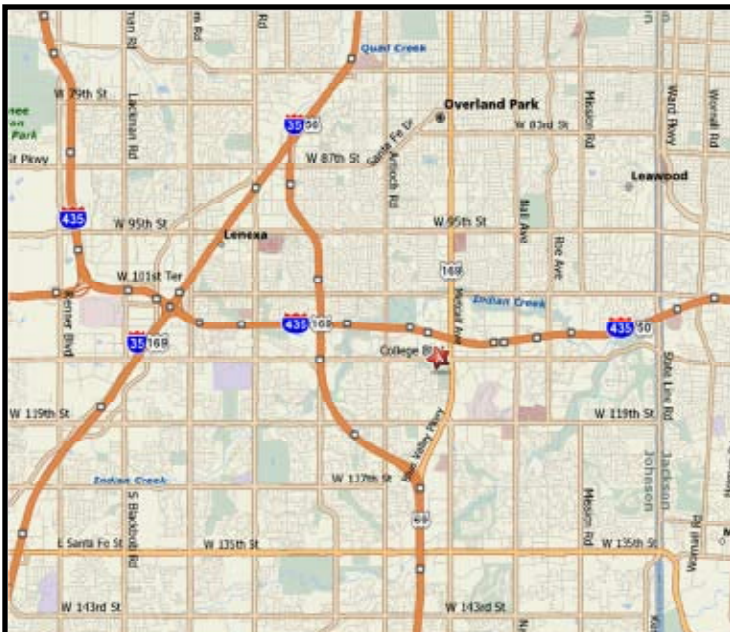
**LIGHTON I**

7300 College Boulevard  
Overland Park, Kansas



**Property Highlights**

- 117,564 RSF building
- \$22.50 PRSF with annual incremental increases
- 6 floors
- Free parking with 4:1,000 SF ratio
- On-site deli
- On-site fitness center
- Nine and ten foot ceiling heights
- Modern security system with card access control
- On-site management and leasing
- Free conference room
- Awarded the coveted Energy Star Rating
- Immediate access to I-435



Jeffrey C. Kembel  
913.469.4604 Direct  
kembel@capital-kc.com

Matthew D. Hanson  
913.469.4607 Direct  
hanson@capital-kc.com

www.capital-kc.com



Commercial Real Estate Services, Worldwide.

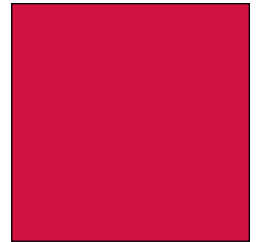
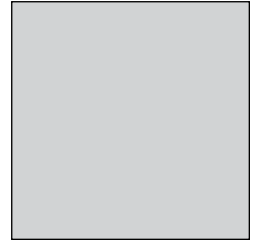
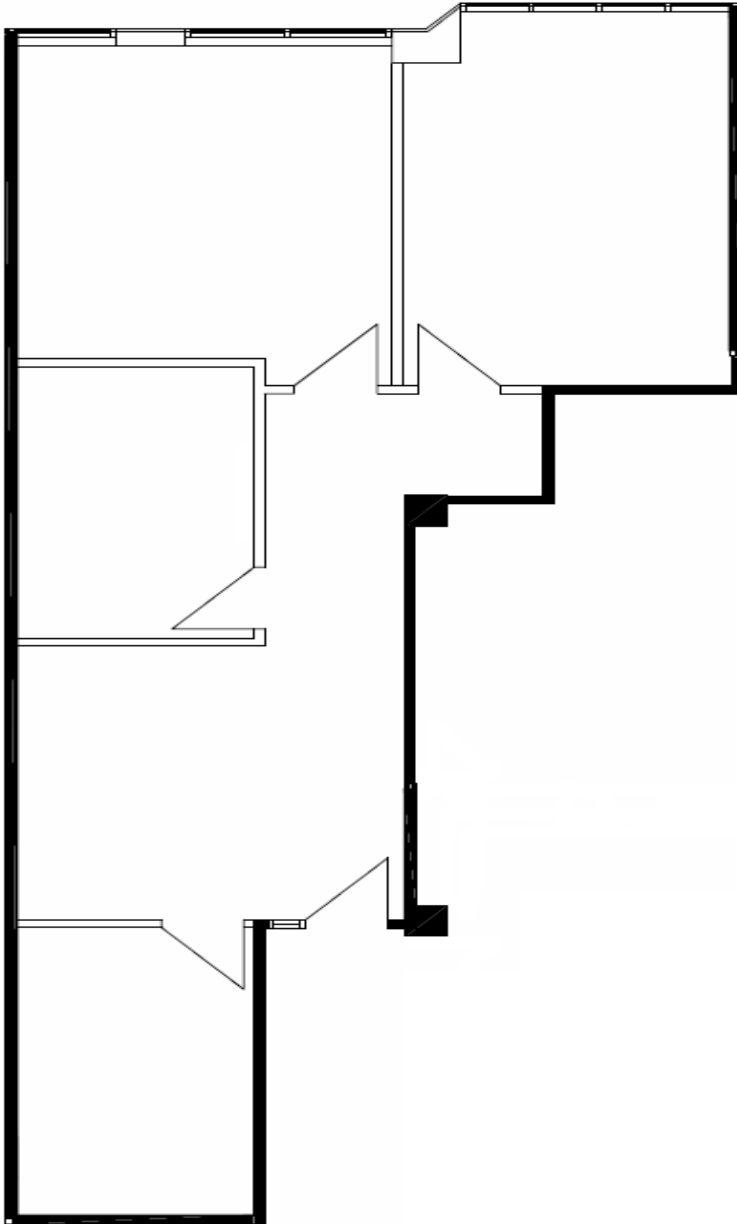
7500 College Boulevard • Suite 920 • Overland Park KS 66210

The information contained herein has been given to us by the owner of the property or other sources we deem reliable. We have no reason to doubt its accuracy, but we do not guarantee it. All information should be verified prior to purchase or lease.

**CLASS A OFFICE SPACE FOR LEASE**

**LIGHTON I**

7300 College Boulevard  
Overland Park, Kansas



**Suite 204**

**1,194 RSF**

For more information or to schedule a tour,  
give us a call.

Jeffrey C. Kembel  
913.469.4604 Direct  
kembel@capital-kc.com

Matthew D. Hanson  
913.469.4607 Direct  
hanson@capital-kc.com

**NAI Capital Realty**

Commercial Real Estate Services, Worldwide.

7500 College Boulevard • Suite 920 • Overland Park KS 66210

[www.capital-kc.com](http://www.capital-kc.com)